

MIXPAC™

Systems for Adhesives



2-COMPONENT INDUSTRY
SOLUTIONS



INDUSTRY



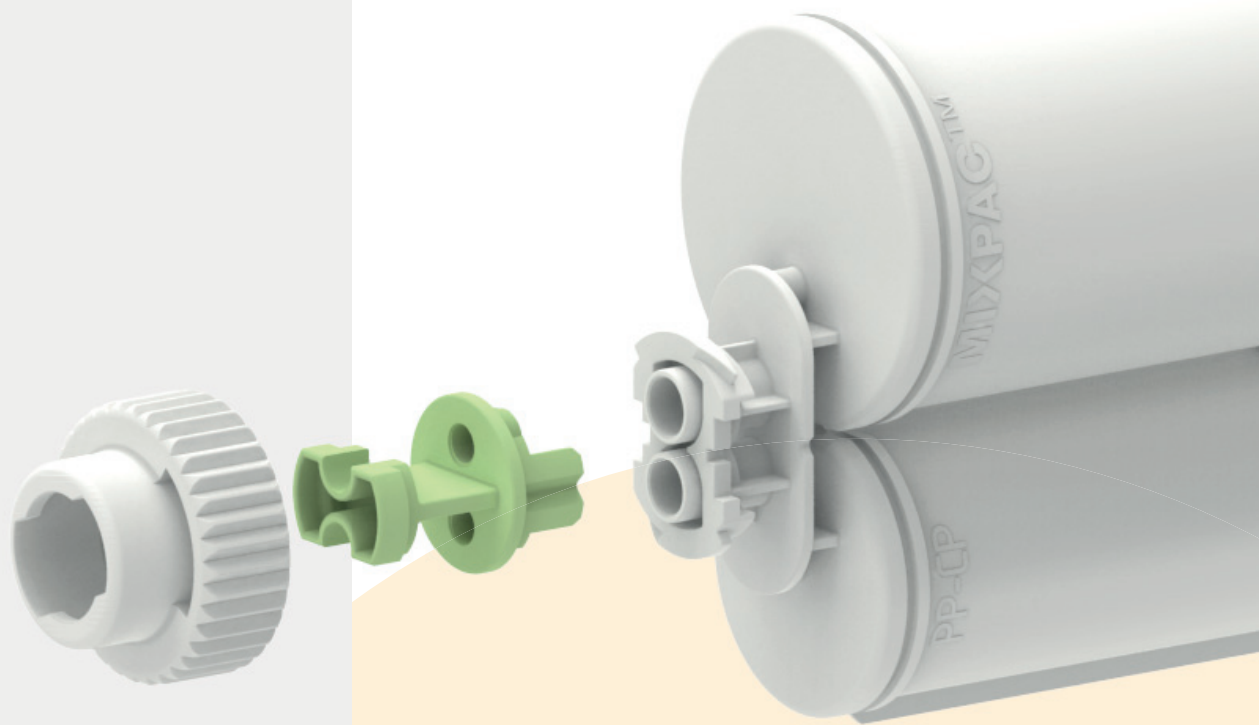
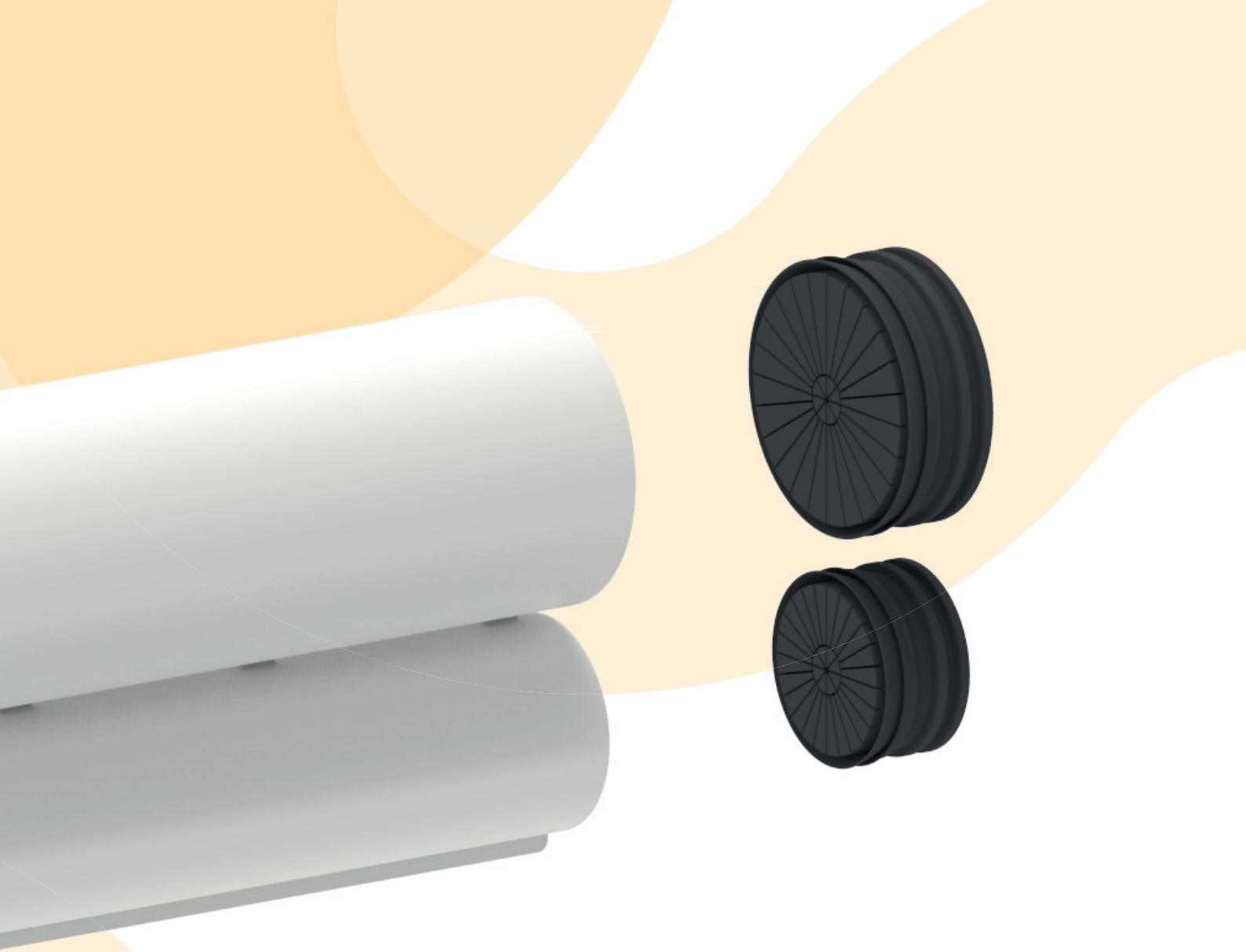


TABLE OF CONTENT

MIXPAC™ A-System	6
MIXPAC™ B-System	10
MIXPAC™ C-System	18
MIXPAC™ F-System	24
MIXPAC™ K-System	30
MIXPAC™ Blueline™	34
MIXPAC™ Machine Mixers	38



OUR BRANDS AT MEDMIX INDUSTRY

medmix Industry delivers one of the world's leading hand-held mixing and dispensing systems for adhesives and sealants. We have strong partnerships with industrial manufacturing, production, coating, and construction leaders that have lasted for close to 100 years.

Through our brands COX™ and MK™, we bring together the best expertise in one and two-component adhesive applications. MIXPAC™ is the leading system provider in the area of mixing, dosing and applying, COX provides a wide range of professional, practical dispensers, and MK is the specialist in customized high-quality dispensing solutions.

The MK product range, originally founded by Krøger A/S in 1922 and acquired by us in 2013 – includes manual, battery and pneumatic driven dispensers for any application.

Originally established in 1958 by Patrick Clement Cox, COX has become the global market leader in the design and production of manual, pneumatic and battery hand held sealant and adhesive applicators. The product range includes cartridge, sachet, bulk and one and two-component dispensers.

INDUSTRY SYSTEMS

The Mixpac A-System is suitable for dispensers with 50 mL volume, mixing ratios 1:1, 2:1, 4:1, 10:1, combinable with dedicated mixing tips.



The Mixpac Machine Mixers assortment includes mixer tips and other accessories for machine applications of 2 component adhesives.

The Mixpac F-System is manufactured from high quality, chemical resistant plastics to meet stringent shelf-life stability and metering requirements for your formulated products. Suitable for dispensers up to 400 mL volume, mixing ratios 1:1, 2:1, 4:1, 10:1, combinable with Helix and Quadro™ mixing tips. Separated outlet ports avoid cross contamination and back curing of your materials.

The Mixpac Blueline System is suitable for high viscosity material that is difficult to dispense, for high flow rate requirements as well as for highly compressible material. Available for 400 mL cartridges, mixing ratios 2:1, 10:1, combinable with T-mixer™ mixing tips.



The Mixpac C-System is manufactured from high quality, chemical resistant plastics to meet stringent shelf-life stability and metering requirements for your formulated products. Suitable for dispensers up to 400 mL volume, mixing ratios 1:1, 2:1, 4:1, 10:1, combinable with dedicated mixing tips.



The Mixpac K-System is suitable both for industry as well as DIY users – thanks to a range of mixing ratios, materials and colors.



The Mixpac B-System meets the growing demand in the industrial and trade markets for reliable, safe, easy-to-use application systems for 2-component adhesives and sealants. Suitable for dispenser volume 25 mL, 50 mL and 75 mL, mixing ratios 1:1, 2:1, 4:1, 10:1, combinable with Helix and Quadro™ mixing tips. Separated outlet ports avoid cross contamination and back curing of your materials.






OVERVIEW

MIXPAC™ A-SYSTEM

50/75 ML INDUSTRIAL SET

ACCESSORIES

ACCESSORIES

	ID	Article
	101651	BRT 205-10
	102274	IOT 406-15
	102277	IOT 506-15
	102356 102357	LA 05-00 LA 06-08

OUTLET TIP

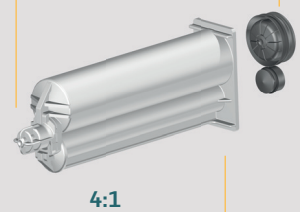
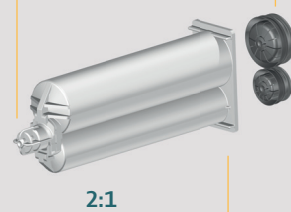
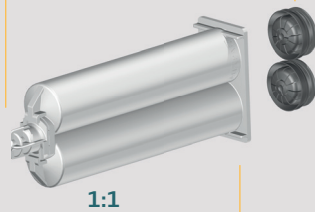
-  Tapered Tip (S)
-  Straight Tip (D)
-  Luer Slip Tip (L)
-  Stepped Tip (T)

MIXER



50 mL

CARTRIDGE



DISPENSER



PISTON RETENTION PLATE

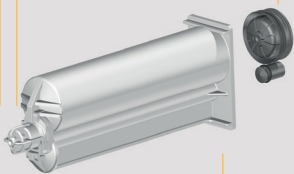


Ratio	ID	Article
1:1/2:1	103213	PR 050-01-02 
4:1/10:1	103214	PR 050-04-10 

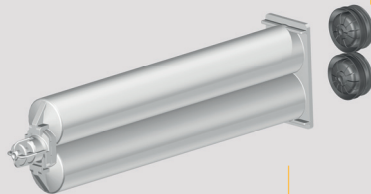


● MAHX (Helix)

75 mL



10:1



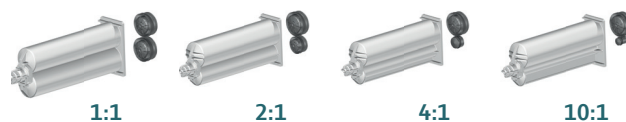
1:1



● TS408

CARTRIDGE SET

50/75 ML INDUSTRIAL SET



CARTRIDGE ASSEMBLY 50/75 ML

Cap preassembled
Colors: ○






Pistons Colors: ○ ●

Cartridge
Colors: Ⓝ ○ ● ⊕



Ratio Set/ Volume	ID	Article	Cartridges Material/ Color	Piston Material/Type	O-ring	Units/ Box	Mixer Technology	Matching Dispenser
1:1 50 mL	110507	AA 050-01-10-03	PP/○	HDPE, solid piston	EPDM	1250	MAH ○ MAQ ●	DMA ● DP ●
	116606	AA 050-01-10-05	PP/⊕	HDPE, solid piston	EPDM	1250	MAH ○ MAQ ●	DMA ● DP ●
	154840	AA 050-01-10-33	PP/○	HDPE, AirFT	–	1250	MAH ○ MAQ ●	DMA ● DP ●
	154826	AA 050-01-10-34	PP/○	HDPE, AirFT	EPDM	1250	MAH ○ MAQ ●	DMA ● DP ●
	154841	AA 050-01-30-33	PA/○	HDPE, AirFT	–	1250	MAH ○ MAQ ●	DMA ● DP ●
	154852	AA 050-01-30-37	PA/●	HDPE, AirFT	–	1250	MAH ○ MAQ ●	DMA ● DP ●
1:1 75 mL	116420	AA 075-01-10-02	PP/○	HDPE, solid piston	EPDM	625	MAH ○ MAQ ●	DMA ● DP ●
	154874	AA 075-01-10-33	PP/○	HDPE, AirFT	–	625	MAH ○ MAQ ●	DMA ● DP ●
	154876	AA 075-01-10-34	PP/○	HDPE, AirFT	EPDM	625	MAH ○ MAQ ●	DMA ● DP ●
2:1 50 mL	111374	AA 050-02-10-03	PP/○	HDPE, solid piston	EPDM	1250	MAH ○ MAQ ●	DMA ● DP ●
	154690	AA 050-02-10-33	PP/○	HDPE, AirFT	–	1250	MAH ○ MAQ ●	DMA ● DP ●
	154644	AA 050-02-10-34	PP/○	HDPE, AirFT	EPDM	1250	MAH ○ MAQ ●	DMA ● DP ●
4:1 50 mL	116417	AA 050-04-10-01	PP/○	A-piston, PA, self-venting lip seal; B-piston, HDPE, solid piston with O-ring	EPDM	1250	MAHX ● MAQ ●	DMA ● DP ●
	116676	AA 050-04-10-03	PP/○	HDPE, solid piston	EPDM	1250	MAHX ● MAQ ●	DMA ● DP ●
	158047	AA 050-04-30-02	PA/Ⓝ	A-piston, PA, self-venting lip seal; B-piston, PA, solid piston with O-ring	EPDM	1250	MAHX ● MAQ ●	DMA ● DP ●
10:1 50 mL	116418	AA 050-10-10-01	PP/○	A-piston, PP, self-venting lip seal; B-piston, HDPE, solid piston with O-ring	–	1250	MAHX ● MAQ ●	DMA ● DP ●
	116675	AA 050-10-10-02	PP/○	HDPE, solid piston	EPDM	1250	MAHX ● MAQ ●	DMA ● DP ●
	116917	AA 050-10-10-03	PP/○	A-piston, PP, self-venting lip seal; B-piston, HDPE, solid piston with O-ring	EPDM	1250	MAHX ● MAQ ●	DMA ● DP ●
	167303	AA 050-10-20-03	PBT/Ⓝ	A-piston, PA, self-venting lip seal; B-piston, PA, solid piston with O-ring	–	1250	MAHX ● MAQ ●	DMA ● DP ●
	158053	AA 050-10-30-02	PA/○	A-piston, PA, self-venting lip seal; B-piston, PA, solid piston with O-ring	EPDM	1250	MAHX ● MAQ ●	DMA ● DP ●

MATCHING MIXERS

	ID	Article	Number of Elements	Inner Diameter Ø mm/inch	Waste Volume (mL)	Units/Box	Outlet Tip				Accessories				
							Stepped Tip (T)	Straight Tip (D)	Luer Slip Tip (L)	Tapered Tip (S)	BRT 205-10	IOT 406-15	IOT 506-15	LA 05-00	LA 06-08
1:1/2:1 MAH 	102361	MAH 03-07S	7	3.0/0.118	0.24	15000				✓					
	102362	MAH 03-13S	13	3.0/0.118	0.36	12000				✓					
	102364	MAH 03-17S	17	3.0/0.118	0.34	10000				✓					
	102366	MAH 04-13S	13	4.0/0.157	0.60	10000				✓					
	102368	MAH 04-17S	17	4.0/0.157	0.75	7500				✓					
	102369	MAH 05-07T	7	5.4/0.213	0.80	10000	✓							✓	
	102370	MAH 05-13D	13	5.4/0.213	1.36	7000		✓			✓		✓		
	102371	MAH 05-13T	13	5.4/0.213	1.36	6500	✓							✓	
	102360	MAH 0517-0413T	17 + 13	5.4/0.213 4.0/0.157	2.07	4000	✓								
	102372	MAH 05-17T	17	5.4/0.213	1.68	4000	✓							✓	
	102373	MAH 05-21T	21	5.4/0.213	2.01	3000	✓							✓	
	102377	MAH 06-12T	12	6.3/0.248	2.08	4500	✓								✓
	102378	MAH 06-17T	17	6.3/0.248	2.94	3000	✓								✓
	102379	MAH 06-21L	21	6.3/0.248	3.33	4000			✓						
	102380	MAH 06-21T	21	6.3/0.248	3.57	2500	✓								✓
4:1/10:1 MAHX 	102535	MAHX 04-17S	17	4.0/0.157	0.75	7500				✓					
	102536	MAHX 05-17T	17	5.4/0.213	1.68	4000	✓							✓	
1:1/2:1/4:1/10:1 MAQ 	300028	MAQ 05-16L	16	5.3/0.209	1.30	5000			✓						
	300026	MAQ 05-24L	24	5.3/0.209	1.90	3000			✓						
	300319	MAQ 05-24L-12 *	24	5.3/0.209	1.90	3000			✓						
	300391	MAQ 05-16L-12 *	16	5.3/0.209	1.30	5000			✓						
	Color	300405	MAQ 05-16L-13 *	16	5.3/0.209	1.30	5000			✓					

* different color

MATCHING DISPENSERS

	ID	Article	Flange	Ratio				Force (kN)
			A	1:1	2:1	4:1	10:1	
DMA dispenser manual 	101875	DMA 51-00-10	✓	✓	✓			1.2
	101883	DMA 54-00-10	✓	✓	✓	✓		1.2
	112790	DMA 59-00-10	✓	✓	✓		✓	1.2
	111746	DMA 75-00-10	✓	✓				1.2
DP: TS408 dispenser pneumatic 	151780	DP2K 050-MR-130	✓	✓	✓	✓	✓	1.3
	153098	DP2K 075-MR-130	✓	✓	✓	✓	✓	1.3

OVERVIEW

MIXPAC™ B-SYSTEM





25/50/75 ML INDUSTRIAL SET

ACCESSORIES

ACCESSORIES

	ID	Article
	101651	BRT 205-10
	102274	IOT 406-15
	102277	IOT 506-15
	102356 102357	LA 05-00 LA 06-08

OUTLET TIP

-  Tapered Tip (S)
-  Straight Tip (D)
-  Luer Slip Tip (L)
-  Stepped Tip (T)

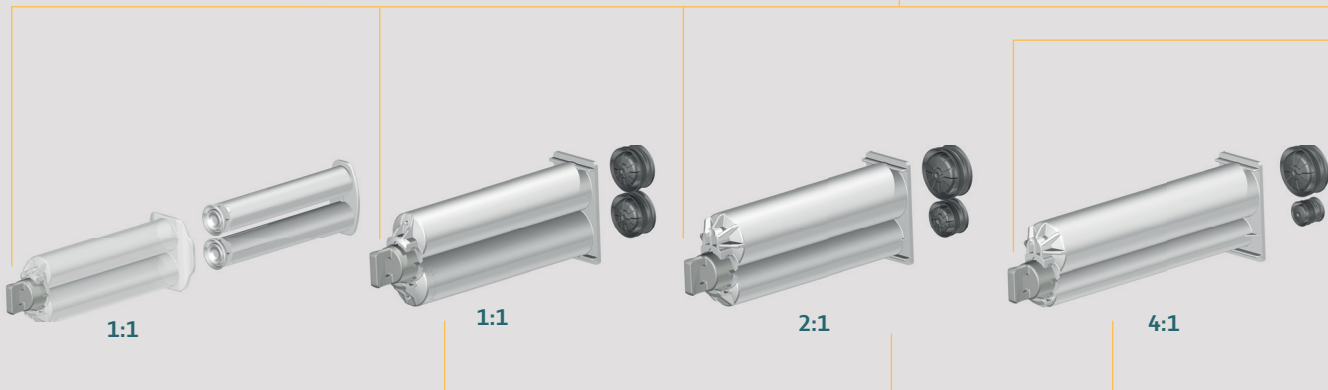
MIXER

-  ○ MBH (Helix)
-  ● MBQ (Quadro™)

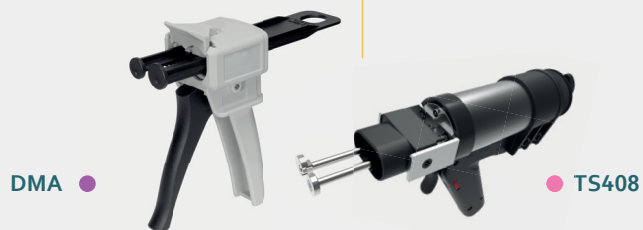
25 mL

50 mL

CARTRIDGE



DISPENSER



INTERFACE CONVERTER

B-System => K-System



Ratio	ID	Article
1:1/2:1	128201	IBK 001-10
4:1/10:1	128202	IBKX 001-10



INTERFACE MIXER

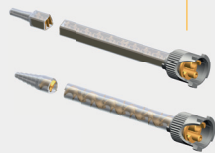
K-System



Ratio	Article
1:1/2:1	MKH
4:1/10:1	MKHX

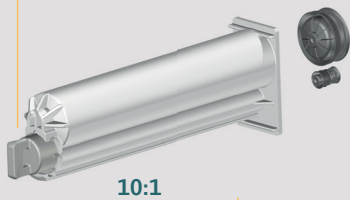
=> for further information see K-System

PISTON RETENTION PLATE

Ratio	ID	Article
1:1/2:1	113719	PRS 050-01-02 
4:1/10:1	116564	PRS 050-04-10A 



-  MBHX (Helix)
-  MBQX (Quadro™)



MIXPAC™ B-SYSTEM

CARTRIDGE SET 25 INDUSTRIAL SET



1:1

CARTRIDGE ASSEMBLY 25 ML

Cap preassembled
Colors: ●



1:1


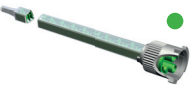
Cartridge
Colors: Ⓝ ●



Plunger
Colors: Ⓝ ● ● ● ●

Ratio Set/ Volume	ID	Article	Cartridges Material/Color	Plunger	Units/ Box	Mixer Technology
1:1 25 mL	116647	AB 025-01-10-01	PP/Ⓝ	Ⓝ	1000	MBH ○ MBQ ●
	116924	AB 025-01-10-02	PP/Ⓝ	●	1000	MBH ○ MBQ ●
	116926	AB 025-01-10-05	PP/Ⓝ	●	1000	MBH ○ MBQ ●
	116927	AB 025-01-10-07	PP/●	●	1000	MBH ○ MBQ ●
	116649	AB 025-01-30-01	PA/Ⓝ	Ⓝ	1000	MBH ○ MBQ ●
	116923	AB 025-01-30-07	PA/●	●	1000	MBH ○ MBQ ●
	129377	AB 025-01-30-09	PA/●	●	1000	MBH ○ MBQ ●

MATCHING MIXERS

	ID	Article	Number of Elements	Inner Diameter Ø mm/inch	Waste Volume (mL)	Units/ Box	Outlet Tip				Accessories							
							Stepped Tip (T)	Straight Tip (D)	Luer Slip Tip (L)	Tapered Tip (S)	LA 05-00	LA 06-08	BRT 205-10	IOT 406-15	IOT 506-15	IOT 715-50		
	116457	MBH 03-12D	12	3.2/0.126	0.49	8000	✓										✓	
	116458	MBH 03-12S	12	3.2/0.126	0.49	8000			✓									
	116459	MBH 03-16D	16	3.2/0.126	0.63	8000	✓											✓
	116460	MBH 03-16L	16	3.2/0.126	0.63	7000		✓										
	116461	MBH 03-16S	16	3.2/0.126	0.59	7000				✓								
	116462	MBH 04-12D	12	4.2/0.165	0.84	7000	✓											✓
	116463	MBH 04-16D	16	4.2/0.165	1.04	5000	✓											✓
	116464	MBH 04-16S	16	4.2/0.165	1.04	5000					✓							
	116575	MBH 05-06T	6	5.4/0.213	0.94	8000	✓				✓							
	116465	MBH 05-12D	12	5.4/0.213	1.52	5000	✓						✓					✓
	116466	MBH 05-14D	14	5.4/0.213	1.91	4000	✓						✓					✓
	116467	MBH 05-16T	16	5.4/0.213	1.91	4000	✓				✓							
	116468	MBH 05-20T	20	5.4/0.213	2.92	3000	✓				✓							
	116469	MBH 06-11D	11	6.5/0.256	2.28	4000	✓						✓					✓
	116470	MBH 06-16T	16	6.5/0.256	3.14	3000	✓						✓					
	116471	MBH 06-20T	20	6.5/0.256	3.76	2000	✓						✓					
	116472	MBH 07-11D	11	7.5/0.295	3.05	4000	✓											✓
	114144	MBQ 05-16L	16	5.3/0.209	1.88	3000		✓										
	114145	MBQ 05-24L	24	5.3/0.209	2.60	3000		✓										

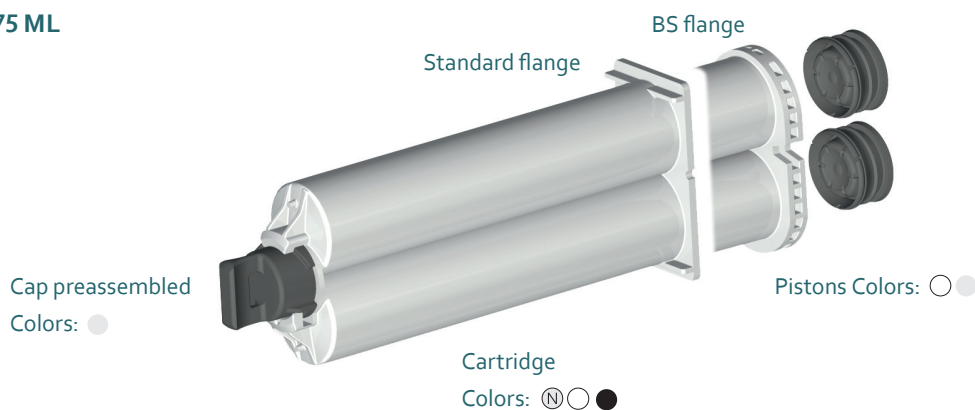
MIXPAC™ B-SYSTEM

CARTRIDGE SET

50/75 INDUSTRIAL SET



CARTRIDGE ASSEMBLY 50/75 ML





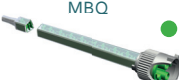
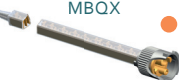
Ratio Set/ Volume	ID	Article	Cartridges Material/Color	Piston Material/Type	O-ring	Units/ Box	Mixer Technology	Matching Dispenser
1:1 50 mL	154853	AB 050-01-10-33	PP/○	HDPE, AirFT	–	1250	MBH ○ MBQ ●	DM ● DP ●
	184125	AB 050-01-13-33	PCR PP/Azure	HDPE, AirFT	–	1250	MBH ○ MBQ ●	DM ● DP ●
	154825	AB 050-01-10-34	PP/○	HDPE, AirFT	EPDM	1250	MBH ○ MBQ ●	DM ● DP ●
	166960	AB 050-01-10-35	PP/○	HDPE, AirFT	Silicone	1250	MBH ○ MBQ ●	DM ● DP ●
	154854	AB 050-01-10-37	PP/●	HDPE, AirFT	–	1250	MBH ○ MBQ ●	DM ● DP ●
	167299	AB 050-01-20-33	PBT/Ⓝ	HDPE, AirFT	–	1250	MBH ○ MBQ ●	DM ● DP ●
	167298	AB 050-01-20-34	PBT/Ⓝ	HDPE, AirFT	EPDM	1250	MBH ○ MBQ ●	DM ● DP ●
	154857	AB 050-01-30-33	PA/○	HDPE, AirFT	–	1250	MBH ○ MBQ ●	DM ● DP ●
	154485	AB 050-01-30-34	PA/○	HDPE, AirFT	EDPM	1250	MBH ○ MBQ ●	DM ● DP ●
	154851	AB 050-01-30-37	PA/●	HDPE, AirFT	–	1250	MBH ○ MBQ ●	DM ● DP ●
2:1 50 mL	154645	AB 050-02-10-33	PP/○	HDPE, AirFT	–	1250	MBH ○ MBQ ●	DM ● DP ●
	186380	AB 050-02-13-33	PCR PP/Azure	HDPE, AirFT	–	1250	MBH ○ MBQ ●	DM ● DP ●
	154646	AB 050-02-10-34	PP/○	HDPE, AirFT	EPDM	1250	MBH ○ MBQ ●	DM ● DP ●
	186381	AB 050-02-13-34	PCR PP/Azure	HDPE, AirFT	EPDM	1250	MBH ○ MBQ ●	DM ● DP ●
	154676	AB 050-02-30-33	PP/○	HDPE, AirFT	–	1250	MBH ○ MBQ ●	DM ● DP ●
	154705	AB 050-02-30-34	PA/○	HDPE, AirFT	EPDM	1250	MBH ○ MBQ ●	DM ● DP ●
	154707	AB 050-02-30-35	PA/Ⓝ	HDPE, AirFT	–	1250	MBH ○ MBQ ●	DM ● DP ●
4:1 50 mL	116421	AB 050-04-10-01	PP/○	A-piston, PP, self-venting lip seal; B-piston, PP, solid lip seal	–	625	MBHX ● MBQX ●	DM ● DP ●
	128606	AB 050-04-10-02	PP/○	A-piston, PP, self-venting lip seal; B-piston, PP, solid lip seal with O-ring	EPDM	625	MBHX ● MBQX ●	DM ● DP ●
	167304	AB 050-04-20-01	PBT/Ⓝ	A-piston, PA, self-venting lip seal; B-piston, PA, solid lip seal	–	625	MBHX ● MBQX ●	DM ● DP ●
10:1 50 mL	116423	AB 050-10-10-01	PP/○	A-piston, PP, self-venting lip seal; B-piston, PP, solid lip seal	–	625	MBHX ● MBQX ●	DM ● DP ●
	151982	AB 050-10-10-02	PP/○	A-piston, PA, self-venting lip seal; B-piston, HDPE, solid piston with O-ring	EPDM	625	MBHX ● MBQX ●	DM ● DP ●
	167300	AB 050-10-20-01	PBT/Ⓝ	A-piston, PA, self-venting lip seal; B-piston, PA, solid lip seal	–	625	MBHX ● MBQX ●	DM ● DP ●

Each product marked with a leaf is part of the greenLine product family.

BS FLANGE

Ratio Set/ Volume	ID	Article	Cartridges Material/Color	Piston Material/ Type	O-ring	Units/ Box	Mixer Technology	Matching Dispenser
1:1 50 mL	154850	AB S50-01-10-33	PP/○	HDPE, AirFT	–	1250	MBH ● MBQ ○	DS ● DP ●
	154829	AB S50-01-10-37	PP/●	HDPE, AirFT	–	1250	MBHX ● MBQX ●	DS ● DP ●
	154828	AB S50-01-30-33	PA/○	HDPE, AirFT	–	1250	MBH ● MBQ ○	DS ● DP ●
75 mL	158029	AB S75-01-10-33	PP/⊗	HDPE, AirFT	–	625	MBHX ● MBQX ●	DS ● DP ●
2:1 50 mL	154708	AB S50-02-10-33	PP/○	HDPE, AirFT	–	1250	MBHX ● MBQX ●	DS ● DP ●
10:1 50 mL	152458	AB S50-10-10-01	PP/○	PP, self venting lip seal	–	625	MBHX ● MBQX ●	DS ● DP ●
	167251	AB S50-10-20-01	PBT/⊗	PP, self venting lip seal	–	1250	MBHX ● MBQX ●	DS ● DP ●
	167253	AB S50-10-20-06	PBT/⊗	PA, solid lip seal with O-ring	Silicone	1250	MBHX ● MBQX ●	DS ● DP ●
	167288	AB S50-10-20-08	PBT/⊗	A-piston, PA, self-venting lip seal / B-piston, PA, solid lip seal with O-ring	Silicone	1250	MBHX ● MBQX ●	DS ● DP ●
10:1 75 mL	167271	AB S75-10-20-02	PBT/⊗	PA, solid lip seal with O-ring	Silicone	900	MBHX ● MBQX ●	DS ● DP ●
	167273	AB S75-10-20-03	PBT/⊗	PA, solid lip seal with O-ring	Silicone	350	MBHX ● MBQX ●	DS ● DP ●
	167274	AB S75-10-20-05	PBT/⊗	A-piston, PA, self-venting lip seal / B-piston, PA, self-venting lip seal with O-ring	Silicone	900	MBHX ● MBQX ●	DS ● DP ●

MATCHING MIXERS

	ID	Article	Number of Elements	Inner Diameter Ø mm/inch	Waste Volume (mL)	Units/ Box	Outlet Tip				Accessories							
							Stepped Tip (T)	Straight Tip (D)	Luer Slip Tip (L)	Tapered Tip (S)	LA 05-00	LA 06-08	BRT 205-10	IOT 406-15	IOT 506-15	IOT 212-20	IOR 209-20	IOT 715-50
 1:1/2:1 MBH	116457	MBH 03-12D	12	3.2/0.126	0.49	8000	✓											
	116458	MBH 03-12S	12	3.2/0.126	0.49	8000			✓									
	116459	MBH 03-16D	16	3.2/0.126	0.63	8000	✓											
	116460	MBH 03-16L	16	3.2/0.126	0.63	7000		✓										
	116461	MBH 03-16S	16	3.2/0.126	0.59	8000			✓									
	116462	MBH 04-12D	12	4.2/0.165	0.84	7000	✓											
	116463	MBH 04-16D	16	4.2/0.165	1.04	5000	✓											
	116464	MBH 04-16S	16	4.2/0.165	1.04	5000			✓									
	116575	MBH 05-06T	6	5.4/0.213	0.94	8000	✓				✓							
	116465	MBH 05-12D	12	5.4/0.213	1.52	5000	✓					✓			✓			
	116466	MBH 05-14D	14	5.4/0.213	1.91	4000	✓					✓			✓			
	116467	MBH 05-16T	16	5.4/0.213	1.91	4000	✓				✓							
	116468	MBH 05-20T	20	5.4/0.213	2.29	3000	✓				✓							
	116469	MBH 06-11D	11	6.5/0.256	2.28	4000	✓					✓			✓			
	116470	MBH 06-16T	16	6.5/0.256	3.14	3000	✓					✓						
	116471	MBH 06-20T	20	6.5/0.256	3.76	2000	✓					✓						
116472	MBH 07-11D	11	7.5/0.295	3.05	4000	✓											✓	
 4:1/10:1 MBHX	116473	MBHX 03-16S	16	3.2/0.126	0.60	7000			✓									
	116474	MBHX 04-16D	16	4.2/0.165	1.05	6000	✓											
	116576	MBHX 04-16S	16	4.2/0.165	1.05	5000			✓									
	116475	MBHX 05-12D	12	5.4/0.213	1.52	5000	✓					✓		✓				
	116476	MBHX 05-16T	16	5.4/0.213	1.91	4000	✓				✓							
	116477	MBHX 05-20T	20	5.4/0.213	2.07	3000	✓				✓							
	116478	MBHX 06-16D	16	6.5/0.256	3.14	3000	✓					✓						
	116480	MBHX 06-16T	16	6.5/0.256	3.04	3000	✓					✓			✓			
	116481	MBHX 06-20T	20	6.5/0.256	3.79	2000	✓					✓						
	 1:1/2:1 MBQ	114144	MBQ 05-16L	16	5.3/0.209	1.88	3000		✓									
154801		MBQ 05-16L-12 ●*	16	5.3/0.209	1.88	3000		✓										
114145		MBQ 05-24L	24	5.3/0.209	2.60	3000		✓										
 4:1/10:1 MBQX	116063	MBQX 05-16L	16	5.3/0.209	1.72	3000		✓										
	116062	MBQX 05-24L	24	5.3/0.209	2.37	3000		✓										

* different color

MATCHING DISPENSERS

		ID	Article	Flange			Ratio				Force (kN)
				B 50	B 550	B 75	1:1	2:1	4:1	10:1	
DM: DMA/DMB dispenser manual		101875	DMA 51-00-10	✓			✓	✓		1.2	
		116795	DMB 50-04-01	✓					✓	1.2	
		116794	DMB 50-10-01	✓						✓	1.2
DS dispenser manual		101934	DS 53-01-00		✓		✓	✓		1.2	
		109146	DS 51-04-00		✓				✓	1.2	
		101929	DS 51-10-00		✓					✓	1.2
		115676	DS 75-10-00		✓					✓	1.2
		110938	DS 77-01-00		✓		✓				1.2
DP: TS408 dispenser pneumatic		151780	DP2K 050-MR-130	✓			✓	✓		1.3	
		153094	DP2K 050-41-130	✓					✓	✓	1.3
		151886	DP2K S50-10-130		✓					✓	1.3
		153098	DP2K 075-MR-130			✓	✓	✓	✓	✓	1.3



INTRODUCING
MIXPAC™ C-SYSTEMS

OVERVIEW

MIXPAC™ C-SYSTEM





200/400 ML INDUSTRIAL SET

ACCESSORIES

ACCESSORIES

	ID	Article
	103663	TA 10-ET
	103664	TC 10-ET
	101656 101657	BSD 10-25 BSD 10-40
	300326	BSDQ 08-38
	102357	LA 06-08
	102358	LA 10-00

OUTLET TIP

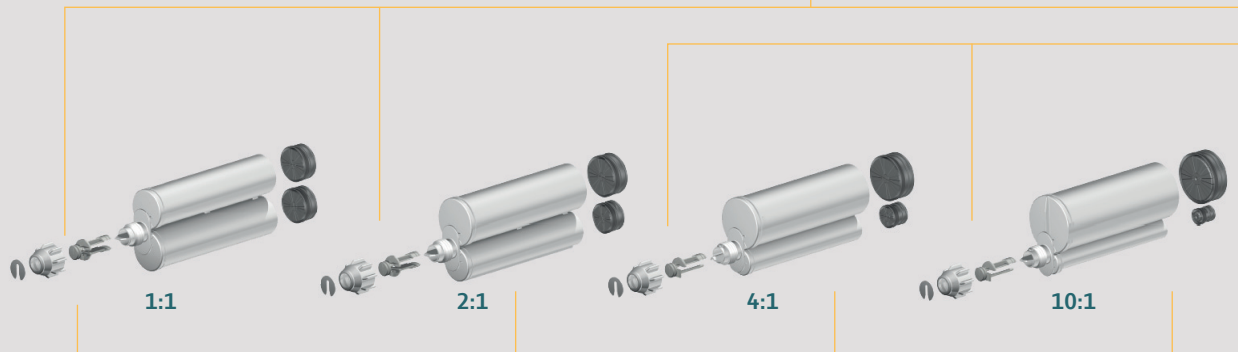
-  Tapered Tip (S)
-  Straight Tip (D)
-  Luer Slip Tip (L)
-  Stepped Tip (T)

MIXER

-  ○ MGH (Helix)
-  ○ MCH (Helix)
-  ● MCQ (Quadro™)
-  ● MGQ (Quadro™)

200 mL

CARTRIDGE

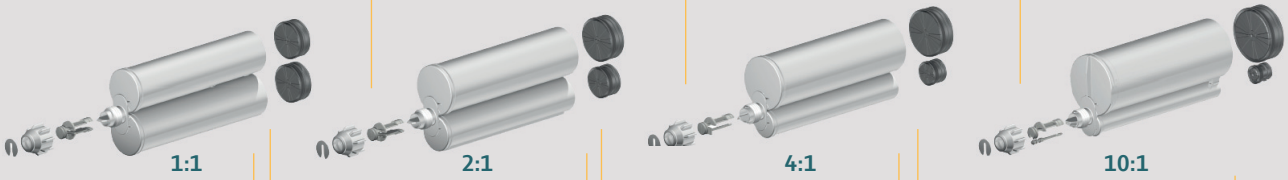


DISPENSER



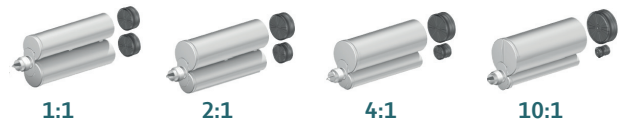


400 mL

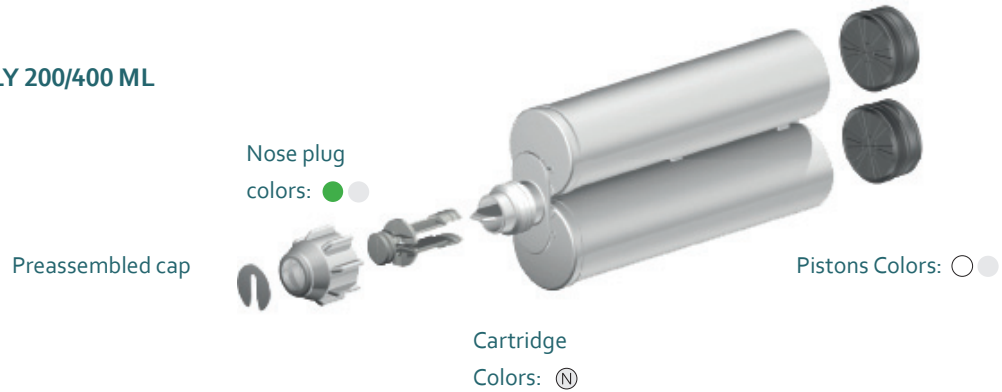


CARTRIDGE SET

200/400 INDUSTRIAL SET





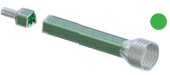


CARTRIDGE ASSEMBLY 200/400 ML






Ratio Set/ Volume	ID	Article	Cartridges Material/Color	Piston Material/ Type	O-ring	Units/ Box	Mixer Technology	Matching Dispenser
1:1 200 mL	112158	AC 200-01-10-01	PP/Ⓝ	PP, self-venting	–	300	MCH ○ MCQ ● MGH ○ MGQ ●	DM ● DP ●
	128249	AC 200-01-10-02	PP/Ⓝ	PA, self-venting	EPDM	300	MCH ○ MCQ ● MGH ○ MGQ ●	DM ● DP ●
	116410	AC 200-01-10-04	PP/Ⓝ	PP, self-venting	–	300	MCH ○ MCQ ● MGH ○ MGQ ●	DM ● DP ●
	116578	AC 200-01-10-05	PP/Ⓝ	PP, self-venting	EPDM	300	MCH ○ MCQ ● MGH ○ MGQ ●	DM ● DP ●
1:1 400 mL	103721	AC 400-01-10-01	PP/Ⓝ	PP, self-venting	–	180	MCH ○ MCQ ● MGH ○ MGQ ●	DM ● DP ● DB ●
	113209	AC 400-01-10-02	PP/Ⓝ	PP, self-venting	EPDM	180	MCH ○ MCQ ● MGH ○ MGQ ●	DM ● DP ● DB ●
	116317	AC 400-01-10-04	PP/Ⓝ	PP, self-venting	–	180	MCH ○ MCQ ● MGH ○ MGQ ●	DM ● DP ● DB ●
	154402	AC 400-01-30-01	PA/Ⓝ	PA, self-venting	–	180	MCH ○ MCQ ● MGH ○ MGQ ●	DM ● DP ● DB ●
	154750	AC 400-01-30-04	PA/Ⓝ	PA, self-venting	–	180	MCH ○ MCQ ● MGH ○ MGQ ●	DM ● DP ● DB ●
2:1 200 mL	112699	AC 200-02-10-01	PP/Ⓝ	PP, self-venting	–	280	MCH ○ MCQ ● MGH ○ MGQ ●	DM ● DP ●
	129165	AC 200-02-10-05	PP/Ⓝ	PP, self-venting	EPDM	280	MCH ○ MCQ ● MGH ○ MGQ ●	DM ● DP ●
2:1 400 mL	108663	AC 400-02-10-01	PP/Ⓝ	PP, self-venting	–	175	MCH ○ MCQ ● MGH ○ MGQ ●	DM ● DP ● DB ●
	116318	AC 400-02-10-04	PP/Ⓝ	PP, self-venting	–	175	MCH ○ MCQ ● MGH ○ MGQ ●	DM ● DP ● DB ●
	129156	AC 400-02-10-05	PP/Ⓝ	PP, self-venting	EPDM	175	MCH ○ MCQ ● MGH ○ MGQ ●	DM ● DP ● DB ●
4:1 200 mL	127894	AC 200-04-10-04	PP/Ⓝ	PP, self-venting	–	265	MCH ○ MCQ ● MGH ○ MGQ ●	DM ● DP ●
4:1 400 mL	112530	AC 400-04-10-01	PP/Ⓝ	PP, self-venting	–	170	MCHX ● MGH ○ MGQ ●	DM ● DP ● DB ●
	115454	AC 400-04-10-05	PP/Ⓝ	PP, self-venting	–	170	MCHX ● MGH ○ MGQ ●	DM ● DP ● DB ●
	116413	AC 400-04-10-04	PP/Ⓝ	PP, self-venting	–	170	MCHX ● MGH ○ MGQ ●	DM ● DP ● DB ●
	128441	AC 400-04-10-06	PP/Ⓝ	PP, self-venting	EPDM	170	MCHX ● MGH ○ MGQ ●	DM ● DP ● DB ●
10:1 200 mL	108397	AC 200-10-10-02	PP/Ⓝ	PP, self-venting	–	250	MCHX ● MGH ○ MGQ ●	DM ● DP ●
	116532	AC 200-10-10-03	PP/Ⓝ	PP, self-venting	EPDM	250	MCHX ● MGH ○ MGQ ●	DM ● DP ●
	127919	AC 200-10-10-04	PP/Ⓝ	A-piston PP, self-venting B-piston PP, self-venting	EPDM	250	MCHX ● MGH ○ MGQ ●	DM ● DP ●
10:1 400 mL	112622	AC 400-10-10-01	PP/Ⓝ	PP, self-venting	–	165	MCHX ●	DM ● DP ● DB ●
	116580	AC 400-10-10-04	PP/Ⓝ	PP, self-venting	–	165	MCHX ●	DM ● DP ● DB ●
	163091	AC 400-10-10-02	PP/Ⓝ	PP, self-venting	–	165	MCHX ● MGH ○ MGQ ●	DM ● DP ● DB ●

MATCHING MIXERS

	ID	Article	Number of Elements	Inner Diameter Ø mm/inch	Waste Volume (mL)	Units/Box	Outlet Tip				Accessories								
							Stepped Tip (T)	Straight Tip (D)	Luer Slip Tip (L)	Tapered Tip (S)	BSD 10-25	BSD 10-40	LA 05-00	LA 06-08	LA 10-00	BSDQ 08-38	TA 10-ET	TC 10-ET	
1:1/2:1 MCH 	102414	MCH 05-18T	18	5.0/0.197	2.10	3000	✓					✓							
	102415	MCH 05-24T	24	5.0/0.197	2.00	2000	✓					✓							
	102416	MCH 05-32T	32	5.0/0.197	2.60	2000	✓					✓							
	102417	MCH 06-18T	18	6.0/0.236	3.60	2000	✓						✓						
	102418	MCH 06-24T	24	6.0/0.236	4.20	2000	✓						✓						
	102419	MCH 06-32T	32	6.0/0.236	5.00	1700	✓						✓						
	102421	MCH 08-18T	18	8.0/0.315	6.70	2000	✓						✓						
	102424	MCH 08-24T	24	8.0/0.315	8.50	1500	✓						✓						
	102425	MCH 08-32T	32	8.0/0.315	10.90	1200	✓						✓						
	102427	MCH 1008-18S	18	8.0/0.315	10.20	1000				✓									
	102429	MCH 10-18T	18	10.0/0.394	12.30	1400	✓								✓				
	102430	MCH 10-20D	20	10.0/0.394	12.60	1200		✓			✓	✓					✓	✓	
	102432	MCH 10-24D	24	10.0/0.394	15.30	1000		✓			✓	✓					✓	✓	
	102431	MCH 10-24T	24	10.0/0.394	14.60	1000	✓								✓				
	102433	MCH 10-32T	32	10.0/0.394	17.70	900	✓								✓				
	102434	MCH 13-12T	13	10.0/0.394	14.70	1400	✓												
	102435	MCH 13-18T	18	13.0/0.512	21.00	1000	✓												
	102437	MCH 13-24T	24	13.0/0.512	27.30	800	✓												
	102438	MCH 13-32T	32	13.0/0.512	25.70	600	✓												
4:1/10:1 MCHX 	102440	MCHX 08-18T	18	8.0/0.315	6.40	1800	✓							✓					
	102443	MCHX 08-24T	24	8.0/0.315	9.30	1500	✓							✓					
	102444	MCHX 10-12T	12	10.0/0.394	9.60	2000	✓							✓					
	102445	MCHX 10-18T	18	10.0/0.394	11.90	1400	✓							✓					
	102446	MCHX 10-24T	24	10.0/0.394	16.20	1000	✓							✓					
	102447	MCHX 13-12T	12	13.0/0.512	11.60	1200	✓												
	112498	MCHX 15-12-30	12	15.0/591	27.00	1000	✓												
1:1/2:1 MCQ 	300002	MCQ 05-24L	24	5.3/207	3.46	1500			✓										
	300006	MCQ 07-24T	24	7.5/295	6.19	1000	✓												
	300455	MCQ 08-24T	24	8.7/0.343	8.44	1300	✓								✓				
	300375	MCQ 08-32T	32	8.7/0.343	10.37	900	✓									✓			
	300496	MCQ 10-24T-01	24	10.7/0.421	14.04	800	✓												
	300377	MCQ 10-32T	32	10.7/0.421	18.45	600	✓												
1:1/2:1/4:1/10:1 MGH 	102480	MGH 08-06S	6	8.0/0.315	3.67	1500					✓								
1:1/2:1/4:1/10:1 MGQ 	300469	MGQ 08-18T	18	8.7/0.343	6.70	1200	✓									✓			
	300454	MGQ 08-20D	20	8.7/0.343	7.57	1000		✓											
	300453	MGQ 08-20T	20	8.7/0.343	7.34	1000	✓									✓			
	300462	MGQ 08-24D	24	8.7/0.343	8.61	800		✓											
	300461	MGQ 08-24T	24	8.7/0.343	8.76	800	✓									✓			
	300493	MGQ 10-19D	19	10.7/0.421	12.15	800		✓											
	300497	MGQ 10-24D	24	10.7/0.421	14.49	650		✓											

MATCHING DISPENSERS

		ID	Article	Ratio				Force (kN)
				1:1	2:1	4:1	10:1	
DM2X dispenser manual		165807	DM2X 400-01-60	✓	✓			6.0
		165808	DM2X 400-04-60			✓		6.0
		165809	DM2X 400-10-60				✓	6.0
DP2X dispenser pneumatic		165864	DP2X 400-01-50	✓	✓			5.0
		165865	DP2X 400-04-50	✓	✓			5.0
		165866	DP2X 400-10-50			✓		5.0
DB2K dispenser battery		152603	DB2K 400-01-500	✓				5.0
		152605	DB2K 400-02-500		✓			5.0
		152607	DB2K 400-04-500			✓		5.0
		152609	DB2K 400-10-500				✓	5.0

A technician wearing a blue t-shirt, safety glasses, and blue gloves is using a MIXPAC F-system to apply sealant to a car's body panel. The technician is holding a large black and white MIXPAC F-system cartridge in his right hand and a green applicator tip in his left hand. The applicator tip is being used to apply a green sealant to a hole in the car's body panel. The car is on a lift, and the technician is looking down at the work. The background shows a workshop environment with various tools and equipment.

INTRODUCING
MIXPAC™ F-SYSTEMS

OVERVIEW

MIXPAC™ F-SYSTEM

200/400 ML INDUSTRIAL SET

ACCESSORIES

ACCESSORIES

	ID	Article
	103663	TA 10-ET
	103664	TC 10-ET
	101656	BSD 10-25
	101657	BSD 10-40
	116166	BSD 13-50
	116165	BSD 08-50
	300326	BSDQ 08-38
	102357	LA 06-08
	102358	LA 10-00

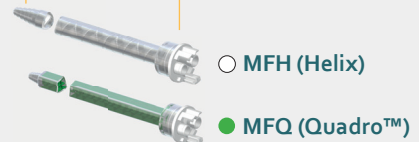
OUTLET TIP

 Straight Tip (D)

 Luer Slip Tip (L)

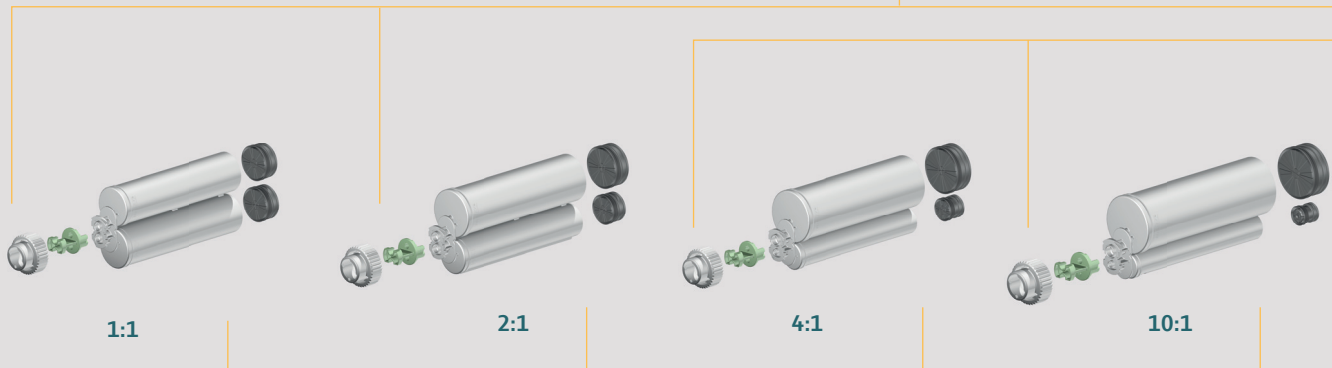
 Stepped Tip (T)

MIXER



200 mL

CARTRIDGE



DISPENSER



INTERFACE CONVERTER

F-System => B-System



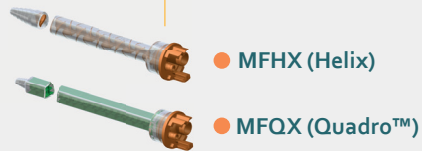
Ratio	ID	Article
1:1/2:1	116803	IFB 001-10
4:1/10:1	116804	IFBX 001-10

INTERFACE MIXER

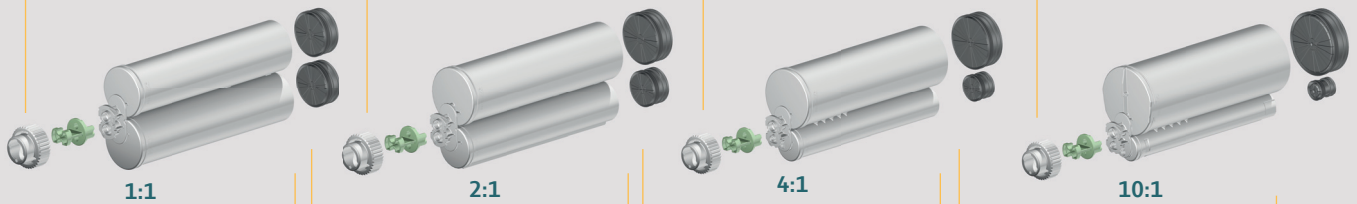
B-System

Ratio	Article
1:1/2:1	MBH
4:1/10:1	MBHX

=> for further information see B-System

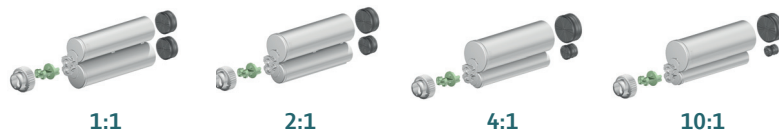


400 mL

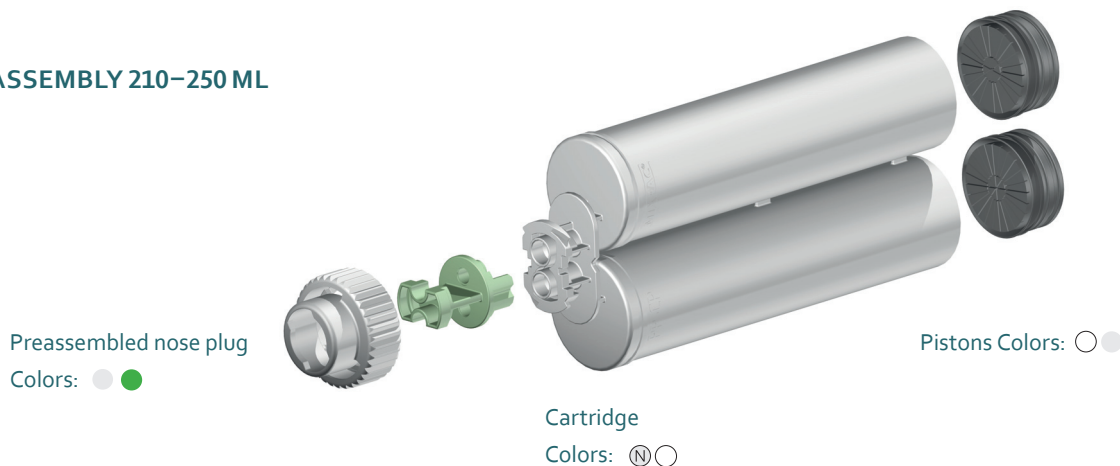


CARTRIDGE SET

200 INDUSTRIAL SET





CARTRIDGE ASSEMBLY 210–250 ML



Ratio Set/ Volume	ID	Article	Cartridges Material/Color	Piston Material/Type	O-ring	Units/ Box	Mixer Technology	Matching Dispenser
1:1 200 mL	112390	AF 200-01-10-01	PP/Ⓝ	PP, self-venting	–	300	MFH ○ MFQ ●	DM ● DP ●
	186437	AF 200-01-13-01	PCR PP/Azure	PCR PP, self-venting	–	300	MFH ○ MFQ ●	DM ● DP ●
	116141	AF 200-01-10-02	PP/(N)	PP, self-venting	EPDM	300	MFH ○ MFQ ●	DM ● DP ●
	186435	AF 200-01-13-02	PCR PP/Azure	PCR PP, self-venting	EPDM	300	MFH ○ MFQ ●	DM ● DP ●
	162880	AF 200-01-10-03	PP/(N)	PP, self-venting	EPDM	300	MFH ○ MFQ ●	DM ● DP ●
	186433	AF 200-01-13-03	PCR PP/Azure	PCR PP, self-venting	EPDM	300	MFH ○ MFQ ●	DM ● DP ●
	151463	AF 200-01-10-04	PP/(N)	PP, self-venting	–	300	MFH ○ MFQ ●	DM ● DP ●
	186436	AF 200-01-13-04	PCR PP/Azure	PCR PP, self-venting	–	300	MFH ○ MFQ ●	DM ● DP ●
	128960	AF 200-01-10-05	PP/Ⓝ	PP, self-venting	–	300	MFH ○ MFQ ●	DM ● DP ●
	186434	AF 200-01-13-05	PCR PP/Azure	PCR PP, self-venting	–	300	MFH ○ MFQ ●	DM ● DP ●
154401	AF 200-01-30-01	PA/Ⓝ	PA, self-venting	–	300	MFH ○ MFQ ●	DM ● DP ●	
2:1 200 mL	112398	AF 200-02-10-01	PP/Ⓝ	PP, self-venting	–	280	MFH ○ MFQ ●	DM ● DP ●
	128607	AF 200-02-10-02	PP/Ⓝ	PP, self-venting	EPDM	280	MFH ○ MFQ ●	DM ● DP ●
	151831	AF 200-02-10-05	PP/Ⓝ	PP, self-venting	–	280	MFH ○ MFQ ●	DM ● DP ●
	159748	AF 200-02-30-05	PA/Ⓝ	PA, self-venting	–	280	MFH ○ MFQ ●	DM ● DP ●
4:1 200 mL	112393	AF 200-04-10-01	PP/Ⓝ	PP, self-venting	–	265	MFHX ● MFQX ●	DM ● DP ●
10:1 200 mL	112402	AF 200-10-10-01	PP/Ⓝ	PP, self-venting	–	250	MFHX ● MFQX ●	DM ● DP ●
	128961	AF 200-10-10-05	PP/Ⓝ	PP, self-venting	–	250	MFHX ● MFQX ●	DM ● DP ●
	167264	AF 200-10-20-01	PBT/Ⓝ	PA, self-venting	–	250	MFHX ● MFQX ●	DM ● DP ●
	167263	AF 200-10-20-05	PBT/Ⓝ	PA, self-venting	–	250	MFHX ● MFQX ●	DM ● DP ●

Each product marked with a leaf is part of the greenLine product family.

MATCHING DISPENSERS

		ID	Article	Ratio				Force (kN)
				1:1	2:1	4:1	10:1	
DM2X dispenser manual		165803	DM2X 200-01-52	✓	✓			5.2
		165804	DM2X 200-04-52			✓		5.2
		165805	DM2X 200-10-52				✓	5.2
DP2X dispenser pneumatic		165860	DP2X 200-01-25	✓	✓			2.5
		165861	DP2X 200-04-25			✓		2.5
		165862	DP2X 200-10-25				✓	2.5

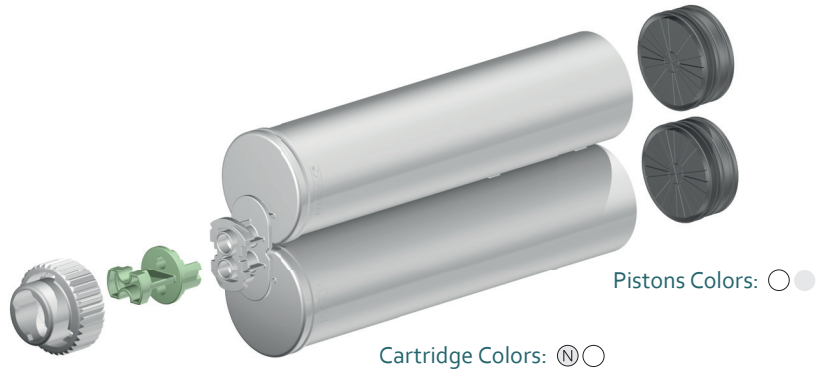
CARTRIDGE SET

400 INDUSTRIAL SET



CARTRIDGE ASSEMBLY 400–490 ML

Preassembled nose plug
Colors: ● ●



Ratio Set/ Volume	ID	Article	Cartridges Material/Color	Piston Material/Type	O-ring	Units/ Box	Mixer Technology	Matching Dispenser
1:1 400 mL	112410	AF 400-01-10-01	PP/ (N)	PP, self-venting	–	180	MFH (O) MFQ (●)	DM (●) DP (●) DB (●)
	185597	AF 400-01-13-01	PCR PP/Azure	PCR PP, self-venting	–	180	MFH (O) MFQ (●)	DM (●) DP (●) DB (●)
	117111	AF 400-01-10-02	PP/ (N)	PP, self-venting	EPDM	180	MFH (O) MFQ (●)	DM (●) DP (●) DB (●)
	186791	AF 400-01-13-02	PCR PP/Azure	PP, self-venting	EPDM	180	MFH (O) MFQ (●)	DM (●) DP (●) DB (●)
	128010	AF 400-01-10-05	PP/ (N)	PP, self-venting	–	180	MFH (O) MFQ (●)	DM (●) DP (●) DB (●)
	186198	AF 400-01-13-05	PCR PP/Azure	PCR PP, self-venting	–	180	MFH (O) MFQ (●)	DM (●) DP (●) DB (●)
	167267	AF 400-01-20-04	PBT/ (N)	PA, self-venting	–	180	MFH (O) MFQ (●)	DM (●) DP (●) DB (●)
	167266	AF 400-01-20-05	PBT/ (N)	PA, self-venting	–	180	MFH (O) MFQ (●)	DM (●) DP (●) DB (●)
2:1 400 mL	112407	AF 400-02-10-01	PP/ (N)	PP, self-venting	–	175	MFH (O) MFQ (●)	DM (●) DP (●) DB (●)
	186347	AF 400-02-13-01	PCR PP/Azure	PCR PP, self-venting	–	175	MFH (O) MFQ (●)	DM (●) DP (●) DB (●)
	113679	AF 400-02-10-02	PP/ (N)	PP, self-venting	EPDM	175	MFH (O) MFQ (●)	DM (●) DP (●) DB (●)
	186348	AF 400-02-13-02	PCR PP/Azure	PCR PP, self-venting	–	175	MFH (O) MFQ (●)	DM (●) DP (●) DB (●)
	128959	AF 400-02-10-05	PP/ (N)	PP, self-venting	–	175	MFH (O) MFQ (●)	DM (●) DP (●) DB (●)
	186349	AF 400-02-13-05	PCR PP/Azure	PCR PP, self-venting	–	175	MFH (O) MFQ (●)	DM (●) DP (●) DB (●)
4:1 400 mL	154807	AF 400-02-30-01	PA/ (N)	PA, self-venting	EPDM	175	MFH (O) MFQ (●)	DM (●) DP (●) DB (●)
	112397	AF 400-04-10-01	PP/ (N)	PP, self-venting	–	170	MFHX (●) MFQX (●)	DM (●) DP (●) DB (●)
10:1 400 mL	167282	AF 400-04-20-01	PBT/ (N)	PA, self-venting	–	170	MFHX (●) MFQX (●)	DM (●) DP (●) DB (●)
10:1 400 mL	113745	AF 400-10-10-01	PP/ (N)	PP, self-venting	–	165	MFHX (●) MFQX (●)	DM (●) DP (●) DB (●)
	116612	AF 400-10-10-05	PP/ (N)	PP, self-venting	–	165	MFHX (●) MFQX (●)	DM (●) DP (●) DB (●)
	167187	AF 400-10-20-01	PBT/ (N)	PA, self-venting	–	165	MFHX (●) MFQX (●)	DM (●) DP (●) DB (●)
	167188	AF 400-10-20-03	PBT/ (N)	PA, self-venting	–	165	MFHX (●) MFQX (●)	DM (●) DP (●) DB (●)
	167186	AF 400-10-20-05	PBT/ (N)	PA, self-venting	–	165	MFHX (●) MFQX (●)	DM (●) DP (●) DB (●)
	186749	AF 400-10-25-05	PIR PBT/Azure	PA, self-venting	–	165	MFHX (●) MFQX (●)	DM (●) DP (●) DB (●)

MATCHING DISPENSERS

	ID	Article	Ratio				Force (kN)
			1:1	2:1	4:1	10:1	
DM2X dispenser manual	165807	DM2X 400-01-60-01	✓	✓			6.0
	165808	DM2X 400-04-60-01			✓		6.0
	165809	DM2X 400-10-60-01				✓	6.0
DP2X dispenser pneumatic	165864	DP2X 400-01-50-01	✓	✓			5.0
	165865	DP2X 400-04-50-01			✓		5.0
	165866	DP2X 400-10-50-01				✓	5.0
DB2K dispenser battery	152603	DB2K 400-01-500	✓				5.0
	152605	DB2K 400-02-500		✓			5.0
	152607	DB2K 400-04-500			✓		5.0
	152609	DB2K 400-10-500				✓	5.0

MATCHING MIXERS

							Outlet Tip			Accessories									
	ID	Article	Number of Elements	Inner Diameter Ø mm/inch	Waste Volume (mL)	Units/Box	Stepped Tip (T)	Straight Tip (D)	Luer Slip Tip (L)	TA10-ET	TC10-ET	LA06-08	LA10-00	BSD-08-50	BSD-10-25	BSD-10-40	BSD-13-50	BSDQ-08-38	
1:1/2:1 MFH	102466	MFH 06-18T	18	6.0/0.236	4.36	1700	✓					✓							
	102467	MFH 06-24T	24	6.0/0.236	5.40	1400	✓					✓							
	116040	MFH 06-32T	32	6.0/0.236	6.65	1200	✓					✓							
	102468	MFH 08-18T	18	8.0/0.315	7.40	1400	✓					✓		✓					
	102469	MFH 08-24T	24	8.0/0.315	9.30	1200	✓					✓		✓					
	102470	MFH 08-32T	32	8.0/0.315	11.85	900	✓					✓		✓					
	102471	MFH 10-18T	18	10.0/0.394	13.09	1000	✓			✓	✓		✓		✓	✓			
	102472	MFH 10-24T	24	10.0/0.394	16.89	900	✓			✓	✓		✓		✓	✓			
	110583	MFH 10-32T	32	10.0/0.394	21.94	500	✓			✓	✓		✓		✓	✓			
	151603	MFH 13-18T	18	13.0/0.512	20.56	800	✓											✓	
	151604	MFH 13-24T	24	13.0/0.512	26.31	600	✓											✓	
	4:1/10:1 MFHX	102473	MFHX 06-18T	18	6.0/0.236	4.16	1700	✓					✓						
		102474	MFHX 06-24T	24	6.0/0.236	5.20	1400	✓					✓						
		113275	MFHX 06-32T	32	6.0/0.236	6.56	1200	✓					✓						
102475		MFHX 08-18T	18	8.0/0.315	7.28	1400	✓					✓		✓					
102476		MFHX 08-24T	24	8.0/0.315	9.14	1200	✓					✓		✓					
112720		MFHX 08-32T	32	8.0/0.315	11.55	900	✓					✓		✓					
102477		MFHX 10-18T	18	10.0/0.394	12.96	1000	✓			✓	✓		✓		✓	✓			
102478		MFHX 10-24T	24	10.0/0.394	16.70	900	✓			✓	✓		✓		✓	✓			
113250		MFHX 10-32T	32	10.0/0.394	21.22	500	✓			✓	✓		✓		✓	✓			
151605		MFHX 13-18T	18	13.0/0.512	20.73	800	✓											✓	
151606		MFHX 13-24T	24	13.0/0.512	26.48	600	✓											✓	
1:1/2:1 MFQ		116032	MFQ 05-16L	16	5.3/0.209	2.90	2500		✓										
	187086	MFQ 08-24D-s13	24	8.7		100x10 20x50		✓											
	187087	MFQ 08-24T-s13	24	8.69		100x10 20x50	✓												
	152076	MFQ 08-24D	24	8.7		750		✓											
	116033	MFQ 05-24L	24	5.3/0.209	3.52	2000		✓											
	116034	MFQ 07-24T	24	7.5/0.295	6.11	1500	✓												
	115959	MFQ 08-24T	24	8.7/0.343	8.69	750	✓											✓	
	116734	MFQ 08-32D	32	8.7/0.343	11.10	800		✓											
	116035	MFQ 10-24T	24	10.7/0.421	14.75	600	✓												
	4:1/10:1 MFQX	116036	MFQX 05-16L	16	5.3/0.209	3.07	2500		✓										
		116037	MFQX 05-24L	24	5.3/0.209	3.69	2000		✓										
116038		MFQX 07-24T	24	7.5/0.295	6.28	1500	✓												
116039		MFQX 08-24T	24	8.7/0.343	8.86	750	✓											✓	
116735		MFQX 08-32D	32	8.7/0.343	11.10	800		✓											
116044		MFQX 10-24T	24	10.7/0.421	14.92	600	✓												

 Each product marked with a leaf is part of the greenLine product family.


OVERVIEW

MIXPAC™ K-SYSTEM

2.5/5/10 ML INDUSTRIAL KIT

ACCESSORIES

ACCESSORIES

	ID	Article
	102267	IOR 209-20
	102272	IOT 212-20

OUTLET TIP

 Tapered Tip (S)

 Straight Tip (D)

MIXER

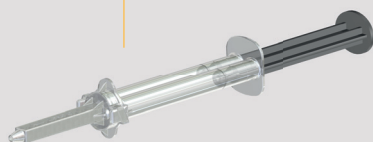


CARTRIDGE

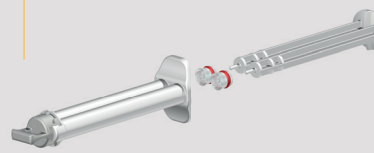
3 mL

2.5mL

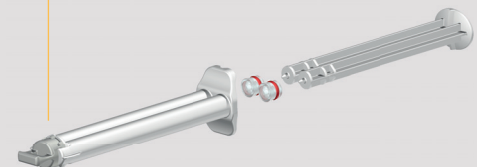
5 mL



1:1



1:1



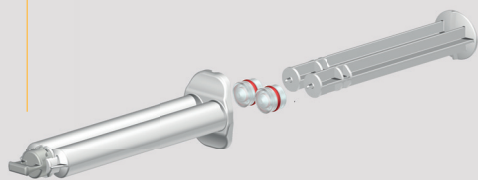
1:1

DISPENSER

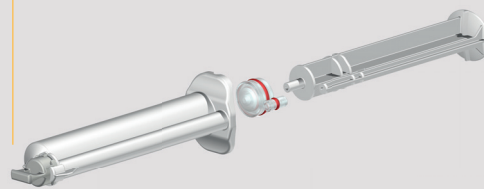


● MKHX (Helix)

10 mL



1:1

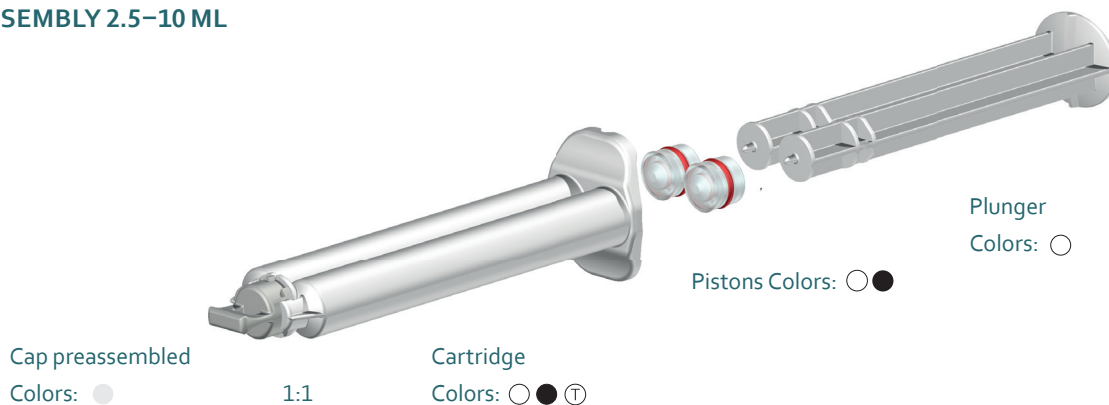


10:1

CARTRIDGE SET INDUSTRIAL KIT





CARTRIDGE ASSEMBLY 2.5–10 ML



Ratio Set/ Volume	ID	Article	Cartridges Material/Color	Plunger Color	Piston Material/Type	Units/ Box	Mixer Technology
1:1 2.5 mL	116436	KK 002-01-10-01	PP/○		HDPE, solid lip seal	2000	MKH ○
	103128	PLH 002-01-45		○		2000	
1:1 3 mL	301618	KK 003-01-10-02	PP/⊕	●	HDPE, solid lip seal integrated plunger	1800	
1:1 5 mL	116438	KK 005-01-10-01	PP/○		HDPE, solid lip seal	1500	MKH ○
	116667	KK 005-01-10-02	PP/⊕		HDPE, black, solid lip seal	1500	MKH ○
	116764	KK 005-01-10-05	PP/⊕		HDPE, solid lip seal with silicone O-ring	1500	MKH ○
	116861	KK 005-01-10-06	PP/●		Silicone, solid lip seal	1500	MKH ○
	113403	PLH X05-01-45		○		2000	
	128616	KK 005-01-10-07	PP/○	○	PP, solid lip seal integrated plunger	1500	MKH ○
	1:1 10 mL	116440	KK 010-01-10-01	PP/○		HDPE, solid lip seal	500
128200		KK 010-01-10-02	PP/⊕		HDPE, solid lip seal	500	MKH ○
116763		KK 010-01-10-05	PP/⊕		HDPE, solid lip seal with silicone O-ring	500	MKH ○
113401		PLH X10-01-45		○		1000	
4:1 10 mL	162623	KK 010-04-10-01	PP/⊕		HDPE, solid lip seal with silicone O-ring	1000	MKHX ●
10:1 10 mL	116442	KK 010-10-10-01	PP/○		HDPE, solid lip seal	500	MKHX ●
	167294	KK 010-10-20-01	PBT/○		HDPE, solid lip seal	500	MKHX ●
	113371	PLH X10-10-45		○		1000	

MATCHING MIXERS

	ID	Article	Number of Elements	Inner Diameter Ø mm/inch	Waste Volume (mL)	Units/ Box	Outlet Tip				Accessories	
							Stepped Tip (T)	Straight Tip (D)	Luer Slip Tip (L)	Tapered Tip (S)	IOT 212-20	IOR 209-20
1:1/2:1 MKH 	114252	MKH 02-08D	8	2.5/0.098	0.14	9000	✓				✓	✓
	114246	MKH 02-08S	8	2.5/0.098	0.19	9000			✓			
	114253	MKH 02-12D	12	2.5/0.098	0.23	8000	✓				✓	✓
	114249	MKH 02-12S	12	2.5/0.098	0.23	8000			✓			
	115686	MKH 02-16S	16	2.5/0.098	0.27	7000			✓			
	114254	MKH 03-12D	12	3.2/0.126	0.39	6000	✓				✓	✓
	114250	MKH 03-12S	12	3.2/0.126	0.39	6000			✓			
	114251	MKH 03-16S	16	3.2/0.126	0.49	4000			✓			
4:1/10:1 MKHX 	114260	MKHX 02-08D	8	2.5/0.098	0.19	9000	✓				✓	✓
	114255	MKHX 02-08S	8	2.5/0.098	0.19	9000			✓			
	114261	MKHX 02-12D	12	2.5/0.098	0.23	8000	✓				✓	✓
	114256	MKHX 02-12S	12	2.5/0.098	0.23	8000			✓			
	114257	MKHX 02-16S	16	2.5/0.098	0.27	7000			✓			
	114262	MKHX 03-12D	12	3.2/0.126	0.39	6000	✓				✓	✓
	114258	MKHX 03-12S	12	3.2/0.126	0.39	6000			✓			
	114259	MKHX 03-16S	16	3.2/0.126	0.49	4000			✓			

OVERVIEW

MIXPAC™ BLUELINE™

400 ML INDUSTRIAL SET

ACCESSORIES

OUTLET TIP



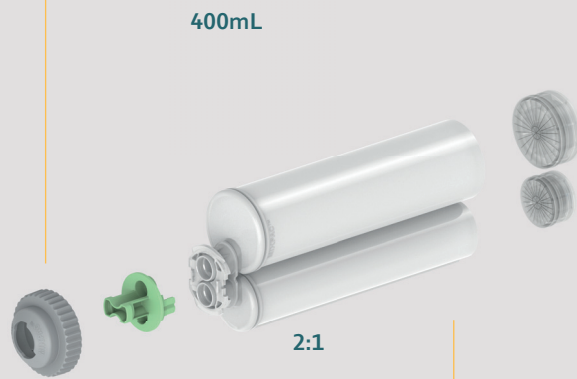
Stepped Tip (T)

MIXER



○ MBLT

CARTRIDGE



DISPENSER



● DM2X



● DP2X

OUTLET TIP



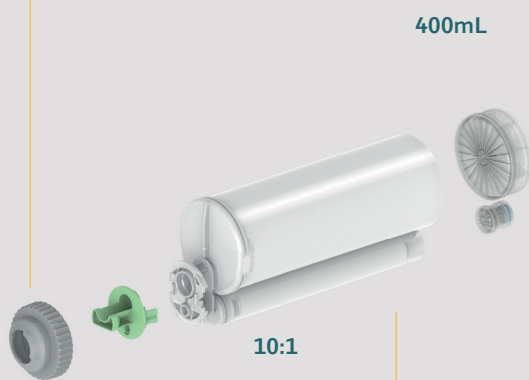
V notch (V)



Threaded Tip (G)



● MBLTX



● DB2C

MIXPAC™ BLUELINE™

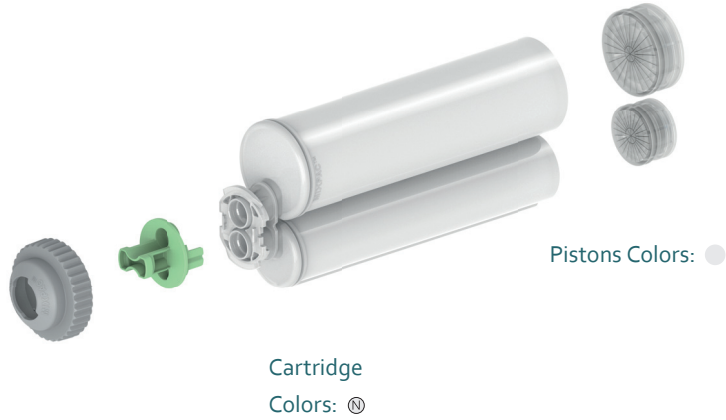
CARTRIDGE SET

400 INDUSTRIAL SET





CARTRIDGE ASSEMBLY 400 ML

Preassembled nose plug,
bigger outlet
Colors grey: ●






Ratio Set/ Volume	ID	Article	Cartridges Material/Color	Piston Material/Type	O-ring	Units/ Box	Mixer Technology	Matching Dispenser
2:1 400 mL	154087	ABL 400-02-10-01	PP/⊗	PP, self-venting	–	180	MBLT ○	DMX2 ● DPX2 ●
10:1 400 mL	154102	ABL 400-10-10-01	PP/⊗	PP, self-venting	–	160	MBLTX ●	DMX2 ● DPX2 ●
	167306	ABL 400-10-20-01	PBT/⊗	PA, self-venting	–	160	MBLTX ●	DMX2 ● DPX2 ●

MATCHING MIXERS

	ID	Article	Number of Elements	Inner Diameter Ø mm/inch	Waste Volume (mL)	Units/Box	Outlet Tip		
							Stepped Tip (T)	Threaded Tip (G)	V Tip (V)
2:1 MBLT	154011	MBLT14-12T	12	14.0/0.551	18.92	800	✓		
									
10:1	153993	MBLTX14-16V	16	14.0/0.551	23.48	580		✓	
	166900	MBLTX14-16G	16	14.0/0.551	23.50	580		✓	
									

MATCHING DISPENSERS

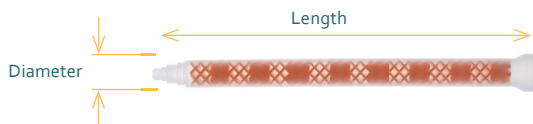
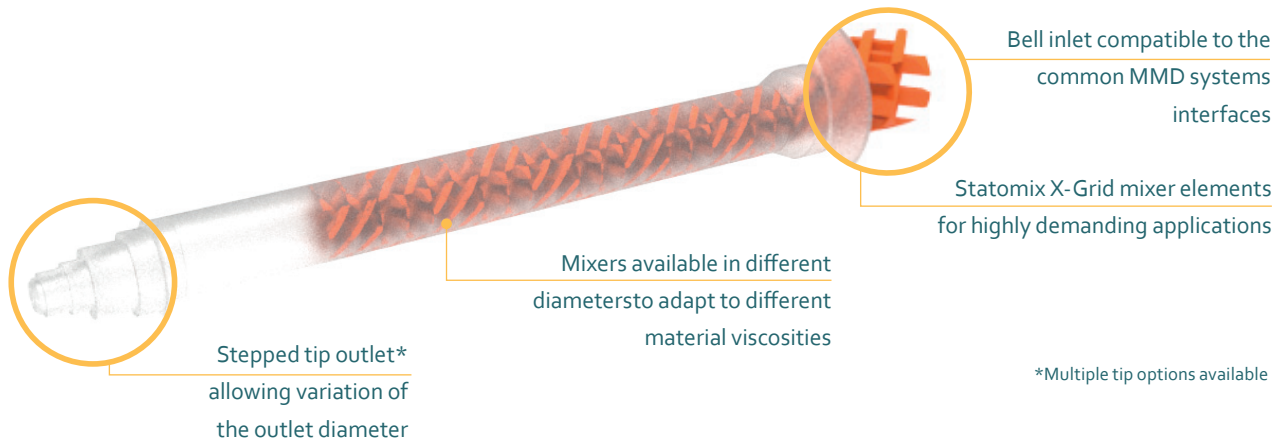
	ID	Article	Ratio				Force (kN)
			1:1	2:1	4:1	10:1	
DM2X dispenser manual	165807	DM2X 400-01-60	✓	✓			6.0
	165809	DM2X 400-10-60				✓	6.0
							
DP2X dispenser pneumatic	165864	DP2X 400-01-50	✓	✓			5.0
	165866	DP2X 400-10-50				✓	5.0
							
ElectraFlow Dual Ultra dispenser battery	163287	DB2C 400-MR-500-001	✓	✓	✓	✓	5.0
							

STATOMIX MP SERIES

STATIC MIXERS WITH X-GRID™ TECHNOLOGY

MIXPAC Statomix MP series provides excellent performance for difficult to mix materials by using the X-Grid technology.

- Designed especially for two-component products which have high viscosity ratios
- Optimal for mixing materials filled with particles, e.g., heat-conducting paste
- Up to 3 times shorter than helical mixers
- Minimal material loss due to highly efficient mixing process
- Avoids unmixed zones near the housing

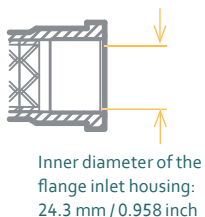
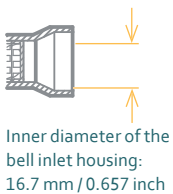


Example shown: MPH 12-16-T-01 with bell inlet



Bell inlet on MPH

Flange type with optional thread MPF 21-xx



ID	Article	Diameter mm	Length mm	Waste Volume (mL)	Inlet Type	Outlet Tip**	Element color	Element material	
167879	MPP 9-20T-01	20	12.5	235	12.5	Bell	T	Orange/White	PP
168026	MPP 9-20T-02	20	12.5	235	12.5	Bell	T	Black	PA
167832	MPH 12-8T	8	14.7	118	9.5	Bell	T	Orange	PP
167833	MPH 12-12T	12	14.7	161	12.8	Bell	T	Orange	PP
167834	MPH 12-16T-01*	16	14.7	201	15.8	Bell	T	Orange	PP
167859	MPH 12-16T-02	16	14.7	201	15.8	Bell	T	Green	PA
167871	MPF 10-6T	6	14.7	115	8.9	Bell	T	Orange/White	PP
167872	MPF 10-9T	9	14.7	155	11.5	Bell	T	Orange	PP
167873	MPF 10-12T	12	14.7	182	14.0	Bell	T	Orange/White	PP
167874	MPF 21-9T-01*	9	29.3	305	97.5	Flange	T	Orange/White	PP
167875	MPF 21-12T	12	29.3	385	123.6	Flange	T	Orange/White	PP
167876	MPF 21-15T-01*	15	29.3	465	149.6	Flange	T/G	Orange/White	PP

* Variations available. Please contact your local sales representative for additional information

** T = Stepped, D = Straight, L = Luer, G = Threaded

STATOMIX ME AND MS SERIES

STATIC MIXERS WITH HELICAL TECHNOLOGY

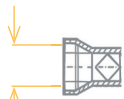
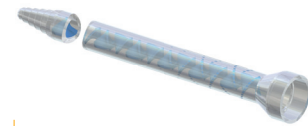
MIXPAC Statomix ME and MS static mixer portfolio provides an efficient and reliable solution for 2-component mixing to be used with meter mix dispense (MMD) equipment:

- Universally applicable to high and low viscosities
- Available with two different inlet diameters to fit most meter mix dispense systems
- Helical mixing element made from POM for increased stability
- Disposable mixers eliminate costly cleaning procedures and decrease equipment downtime

For safety reasons, Statomix ME and MS static mixers must be used with shrouds.



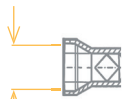
STATOMIX ME SERIES



Inner diameter of the bell inlet housing: 15.9 mm / 0.625 inch

ID	Article	Number of Elements	Diameter Ø mm	Length Ø mm	Waste Volume (mL)	Tip Style**	Element color	Element material
102448	ME 05-24T	24	8	149	2.3	T	Blue	POM
102449	ME 05-32T	32	8	188	2.8	T	Blue	POM
102450	ME 06-24T	24	10	185	4.2	T	Blue	POM
102451	ME 06-32T	32	10	234	6.6	T	Blue	POM
102452	ME 06-48T	48	10	334	10.0	T	Blue	POM
102453	ME 08-24T	24	12	223	8.5	T	Blue	POM
102454	ME 08-32T	32	12	287	11.5	T	Blue	POM
102456	ME 10-24T	24	14	276	16.0	T	Blue	POM
102457	ME 10-32T	32	14	352	23.0	T	Blue	POM
102455	ME 1012-0832T	44	14 12	409	19.2	T	Blue	POM
102459	ME 13-24T	24	17	293	26.4	T	Blue	POM
102461	ME 13-32T	32	17	379	33.7	T	Blue	POM
102458	ME 1312-1032D	44	17 14	499	37.5	D	Blue	POM

STATOMIX MS SERIES



Inner diameter of the bell inlet housing: 16.7 mm / 0.657 inch

ID	Article	Number of Elements	Diameter Ø mm	Length Ø mm	Waste Volume (mL)	Tip Style**	Element color	Element material
102503	MS 05-24T	24	8	148	2.3	T	Yellow	POM
102504	MS 05-32T	32	8	188	2.8	T	Yellow	POM
162540	MS 06-18T	18	10	149	3.8		Yellow	POM
102505	MS 06-24T	24	10	185	4.2	T	Yellow	POM
102506	MS 06-32T	32	10	234	6.6	T	Yellow	POM
102507	MS 06-48T	48	10	334	10.0	T	Yellow	POM
102508	MS 06-56D	56	10	378	11.0	D	Yellow	POM
102509	MS 06-56L	56	10	392	11.0	L	Yellow	POM
102510	MS 08-24T	24	12	223	8.5	T	Yellow	POM
102511	MS 08-32T	32	12	287	11.5	T	Yellow	POM
102513	MS 10-18T	18	14	214	12.3	T	Yellow	POM
102514	MS 10-24T	24	14	276	16.0	T	Yellow	POM
102515	MS 10-32T	32	14	352	23.0	T	Yellow	POM
102512	MS 1012-0832T	44	14 12	409	19.0	T	Yellow	POM
102517	MS 13-18G	18	17	223	21.6	G	Yellow	POM
102518	MS 13-24T	24	17	293	27.0	T	Yellow	POM
102522	MS 13-32G-01	32	17	373	34.5	G	Yellow	POM
102520	MS 13-32T	32	17	379	34.5	T	Yellow	POM
102516	MS 1312-1032D	44	17 14	494	37.5	D	Yellow	POM

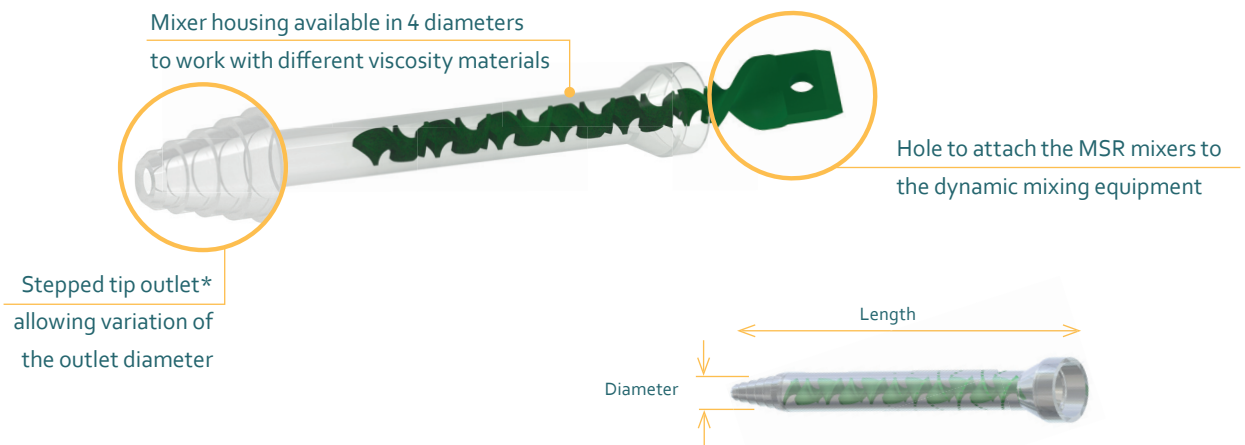
** T = Stepped, D = Straight, L = Luer, G = Threaded

STATOMIX MSR SERIES

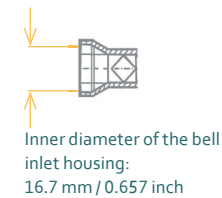
STATIC ROTARY HELICAL MIXERS

MIXPAC Statomix MSR rotary mixers are specifically designed to be used with dynamic meter mix dispense equipment, used for hard to mix low viscosity adhesives and sealants:

- Highly effective for mixing of components with high viscosity difference
- Disposable mixers eliminate costly cleaning procedures and decrease equipment downtime
- Rotary mixing process enables superior mixing quality with a reduced number of mixing elements
- Mixer length up to 70% shorter versus static mixers also results in significant material waste reduction and an increase in process efficiency.
- Helical mixing element made from Acetal (POM) for increased stability



STATOMIX MSR SERIES



ID	Article	Number of Elements	Diameter* Ø mm	Length Ø mm	Waste Volume (mL)	Tip Style**	Element color	Element material
102499	MSR 06-12T	12	10	111	4.1	T	Green	POM
102500	MSR 08-12T	12	12	130	6.1	T	Green	POM
102501	MSR 10-12T	12	14	155	9.9	T	Green	POM
102502	MSR 13-12T	12	17	197	18.1	T	Green	POM

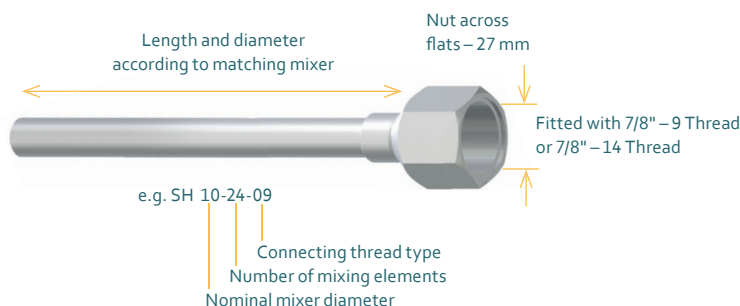
* Dimensions are nominal values
** T = Stepped, D = Straight, L = Luer, G = Threaded

STATOMIX SHROUDS AND ACCESSORIES

High pressures associated with dispensing equipment require the use of shrouds:

- Available for MS, ME, and MPH Series Statomix Mixers
- Prevent the mixer housing from expanding
- Ensure an optimal mixing quality and safe operation
- Made from anodized aluminum and is reusable
- Ensures precise tip alignment to the point of application

Luer lock adapters, made from PBT, can be installed onto the stepped tips of the mixers enabling the usage of Luer needle tips or other accessories for your applications.



STATOMIX SHROUDS

FOR STATOMIX ME AND MS SERIES MIXERS

MADE FROM ALUMINUM ALLOY

Series	ID	Article	Inner Diameter Ø mm/inch	Outer Diameter Ø mm/inch	Length (mm/ inch)	Units/ Box	Fits Mixer Size
7/8" 9 UNC Thread	114351	SH 05-24-09	8.2/0.323	11.5/0.453	146.0/5.75	1	05-24
	114356	SH 05-32-09	8.2/0.323	11.5/0.453	185.0/7.28	1	05-32
	114352	SH 06-24-09	10.2/0.402	14.0/0.551	179.5/7.07	1	06-24
	114357	SH 06-32-09	10.2/0.402	14.0/0.551	228.5/9.00	1	06-32
	114349	SH 06-48-09	10.7/0.421	15.0/0.591	329.0/12.95	1	06-48
	114365	SH 06-56-09	10.7/0.421	15.0/0.591	383.5/15.11	1	06-56
	114353	SH 08-24-09	12.2/0.480	16.0/0.630	215.0/8.46	1	08-24
	114358	SH 08-32-09	12.2/0.480	16.0/0.630	279.0/10.98	1	08-32
	114354	SH 10-24-09	14.2/0.559	19.0/0.748	265.5/10.45	1	10-24
	114359	SH 10-32-09	14.2/0.559	19.0/0.748	341.5/13.44	1	10-32
	114366	SH 13-24-09	17.2/0.677	23.0/0.906	280.3/8.200	1	13-24
	114368	SH 13-32-09	17.2/0.677	23.0/0.906	365.3/14.381	1	13-32
	114362	SH 10-44-09	14.2/0.559 12.2/0.480	19.0/0.748 16.0/0.630	401.0/15.79	1	1012-0832
	114364	SH 13-44-09	17.2/0.677 14.2/0.559	23.0/0.906 19.0/0.748	503.0/19.80	1	1312-1032
7/8" 14 UNF Thread	114335	SH 05-24-14	8.2/0.323	11.5/0.453	146.0/5.75	1	05-24
	114340	SH 05-32-14	8.2/0.323	11.5/0.453	185.0/7.28	1	05-32
	114336	SH 06-24-14	10.2/0.402	14.0/0.551	179.5/7.07	1	06-24
	114341	SH 06-32-14	10.2/0.402	14.0/0.551	228.5/9.00	1	06-32
	114348	SH 06-48-14	10.7/0.421	15.0/0.591	329.0/12.95	1	06-48
	114347	SH 06-56-14	10.7/0.421	15.0/0.591	383.7/15.11	1	06-56
	114337	SH 08-24-14	12.2/0.480	16.0/0.630	215.0/8.46	1	08-24
	114342	SH 08-32-14	12.2/0.480	16.0/0.630	279.0/10.98	1	08-32
	114338	SH 10-24-14	14.2/0.559	19.0/0.748	265.5/10.45	1	10-24
	114343	SH 10-32-14	14.2/0.559	19.0/0.748	341.5/13.44	1	10-32
	114367	SH 13-24-14	17.2/0.677	23.0/0.906	280.3/11.04	1	13-24
	114369	SH 13-32-14	17.2/0.677	23.0/0.906	365.3/14.38	1	13-32
	114345	SH 10-44-14	14.2/0.559 12.2/0.480	19.0/0.748 16.0/0.630	401.0/15.79	1	1012-0832
	114346	SH 13-44-14	17.2/0.677 14.2/0.559	23.0/0.906 19.0/0.748	503.0/19.80	1	1312-1032

For safety reasons, MIXPAC™ shrouds must be used at all times.

FOR STATOMIX MPH SERIES MIXERS

MADE FROM ALUMINUM ALLOY

Series	ID	Article	Inner Diameter Ø mm/inch	Outer Diameter Ø mm/inch	Length (mm/ inch)	Units/ Box	Fits Mixer Size
7/8" 9 UNC Thread	183628	SH 12-8-09	14.9/0.587	19/0.748	111.9/4.405	1	12-8
	183790	SH 12-12-09	14.9/0.587	19/0.748	153.9/6.059	1	12-12
	183792	SH 12-16-09	14.9/0.587	19/0.748	194.9/7.673	1	12-16
7/8" 14 UNF Thread	183629	SH 12-8-14	14.9/0.587	19/0.748	111.9/4.405	1	12-8
	183791	SH 12-12-14	14.9/0.587	19/0.748	153.9/6.059	1	12-12
	183793	SH 12-16-14	14.9/0.587	19/0.748	194.9/7.673	1	12-16

DELIVERING INNOVATION. INSPIRING CONFIDENCE.

EUROPE

medmix Switzerland AG

Ruetistrasse 7
9469 Haag, Switzerland
Phone +41 81 414 70 00
sales.industry@medmix.com
www.medmix.swiss

USA, SOUTH AMERICA, CANADA AND MEXICO

medmix US Inc.

8 Willow St.
Salem, NH 03079, USA
Phone +1 603 893 2727
sales.industry@medmix.com
www.medmix.swiss

UK AND IRELAND

medmix UK Ltd.

1 Tealgate, Charnham Park, Hungerford
Berkshire, RG17 0YT, United Kingdom
Phone: +44 (0)1488 647 800
sales.industry@medmix.com
www.coxdispensers.com

SPAIN

medmix Spain S.A.

Calle No. Diez, 22
ES 46470 Albal (Valencia)
Phone +34 96 276 31 99
sales.spain@medmix.com
www.medmix.swiss

ASIA PACIFIC

medmix China Ltd.

68 Bei Dou Lu, Minhang Shanghai
200245, China
Phone: +86 21 6430 68 68
sales.industry@medmix.com
www.medmix.swiss



Legal Notice: This brochure is a general presentation. The information contained in this publication is believed to be accurate and reliable but is not to be construed as implying any warranty or guarantee of performance. We waive any liability and indemnity for effects resulting from its application. Please, contact us for a description of the warranties and guarantees offered with our products. Directions for use and safety will be given separately. All information herein is subject to change without notice.

© 2024 medmix Switzerland AG All rights reserved.

medmix is a trademark belonging to medmix AG, and MIXPAC is a trademark belonging to medmix Switzerland AG.