

Araldite®

professional adhesives



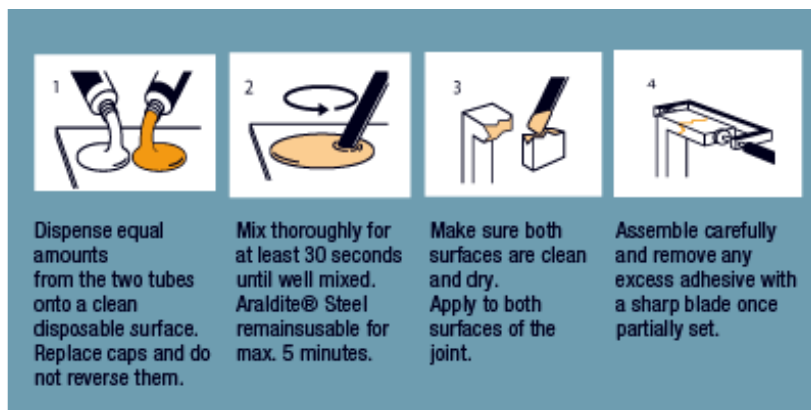
Araldite® Steel 2x15ml Tube

A strong, long lasting solvent-free adhesive which is water resistant and can be painted or sanded. Perfect for jobs on metal like plumbing, car bodywork, gates and windows.

Important

Bonds most types of metal including steel, galvanised steel, cast iron, aluminium, iron, copper and brass. Will also bond non-metallic materials, such as ceramic, wood and glass.

Make sure surfaces are clean and free from dust, corrosion, dirt and grease. For optimum bonding, slightly roughen surfaces with sandpaper and degrease metals with a suitable solvent. During assembly apply light pressure to the joint until set (clamps, tap) around. Allow 4 hours to attain full strength before rough handling or sanding.



How to apply

Araldite® Steel is a strong 2-component epoxy with fast setting. Will not rust. Metallic grey colour. Fills gaps for uneven breaks. Parts repositionable for 4 minutes. Oil, chemical and impact resistant. High temperature resistance (-30°C to 100°C). Do not use to repair or bond items that will contact food or drink. Not recommended for bonding rear-view mirrors to car windscreens.

Storage

Should be stored in a dry place at room temperature in the original tubes.

New

Environmentally friendly product formulation plus eco-friendly packaging for easy recycling.

Copyright© 2011. Huntsman Advanced Materials (Switzerland) GmbH. All Rights Reserved.

Araldite® is a registered trademark of Huntsman Corporation or an affiliate thereof in one or more, but not all countries.

www.go-araldite.com